



Stationary 2-post lift

TPL7500

article no.: TPL7500

Our stationary two-post lift with a capacity of 7.5 t is suitable for all current cars, vans, light duty trucks and electric vehicles. This lift is equipped with a unique load support area as the swivel arms have a stretched length of 4600 mm. Mounted on roller bearings, the swivel arms are easy to move and can be pushed together to save space. No cross connection between the columns.

**specifications**

article no.		TPL7500
lifting unit	quantity of columns	2
load support	load support	4 swivel arms, symmetric
	capacity	7.5 t
	length of swivel arm at front, minimum (mm)	485 mm
	length of swivel arm at front, maximum (mm)	1530 mm
	length of swivel arm at rear, minimum (mm)	485 mm
	length of swivel arm at rear, maximum (mm)	1530 mm
	distance between supports, maximum	4600 mm
	load pad Ø	120 mm
lifting height	lifting stroke effective	1950 mm
	lifting height	2150 mm
	minimum support height (mm)	140 mm
	height adjustment of load pad	60 mm
	height maximum	4400 mm
speed	lifting time	46 sec.
	lowering time (under load)	46 sec.
drive	mode of drive	electro-hydraulic
	motor	AC voltage
	motor power per column (kW)	2.2 KW
power supply	electrical connection	400V/3Ph+N+PE/50Hz
	fuse (Amps)	16 A
communication		communication via radio, wireless
operation	mode of operation	operation at each column
	control	electronic
	Softstart	X
regularisation	synchronisation	proportional valves, infinitely variable
load securing	load securing	hydraulic and mechanical
dimensions	drive-in width	2700 mm
weight		1900 kg
protection class		IP54
floor load	quality of foundation	C20/25, at least 200 mm
surface treatment	type of surface treatment	powder coating
	colour	orange RAL2004 / grey RAL7015

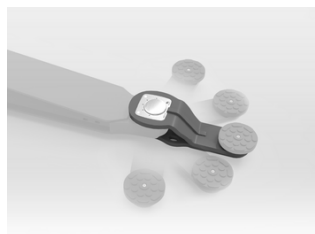


accessories



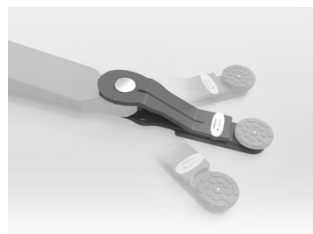
TPL7500-FM07

set of anchors, stainless steel



TPL7500-SWE250

swivel arm extensions, 250 mm,
7.5 t



TPL7500-SWE400

swivel arm extensions, 400 mm,
5 t



TPL7500-WF1250

4 wheel forks, 5 t, wheel Ø up to
740 mm



TPL7500-LS01

support set for Sprinter



TPL7500-LA100

2 distance tubes 100 mm



TPL7500-LA200

2 distance tubes 200 mm



TPL7500-LA300

2 distance tubes 300 mm



TPL7500-LAH

holder for supports and
extension tubes



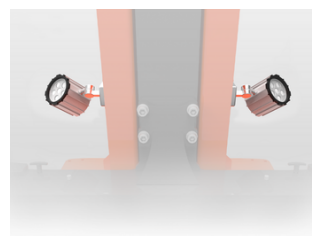
TPL7500-UG

U-guidances as anti-slip
protection



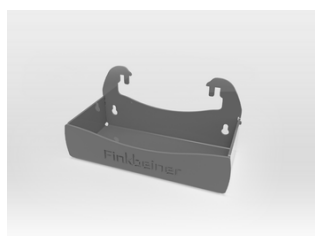
TPL7500-RP01-4

flat rubber pads



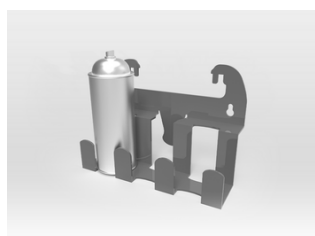
TPL7500-SPOT04

LED spots



TPL7500-TH

tool holder



TPL7500-SH

spray can holder