

Semi-scissor platform lift

HDS50 Tandem

article no.: HDS50xxxxxF02

The heavy duty semi-scissor lift HDS50 is adapted for all commercial vehicles including a complete truck and trailer. For that purpose, you can combine two single HDS lifts as a tandem lift (capacity 2 x 25 t). Each lift can still be operated individually as a single lift. Thereby, your



Semi-scissor platform lift

HDS50 Tandem

PAGE 2/4

workshop is equipped for each type of vehicle.



specifications

article no.		HDS50xxxxxF02
load support	load support	platforms
	capacity	50 t
	quantity of platforms	4
	width of platforms (mm)	750 mm
	height of platforms (mm)	360 mm
	distance between platforms	1100 mm
	platform surface	smooth metal sheet
lifting height	lifting stroke effective	1780 mm
	lifting height / floor version	2140 mm
	lifting height / recessed version	1780 mm
speed	lifting time	90 sec.
drive	mode of drive	electro-hydraulic
	motor	AC voltage
	motor power (kW)	17.6 kW
power supply	type of power supply	mains supply
	electrical connection	400V/3Ph+N+PE/50Hz
	compressed air connection	6 bar
	fuse (Amps)	50 A
operation	mode of operation	1 central control unit
	activation	all
	control	electronic
	Softstart	X
regularisation	synchronisation	proportional valves, infinitely variable
load securing	load securing	hydraulic and mechanical
protection class		IP65
floor load	quality of foundation	C20/25
surface treatment	type of surface treatment	powder coating
	colour	grey RAL7015



accessories



HDSF07-ST02
Electric sockets 230V



HDSF07-DL02
Pneumatic sockets



HDSF07-BL-LEDXX
Set with 4 to 10 LED lamps



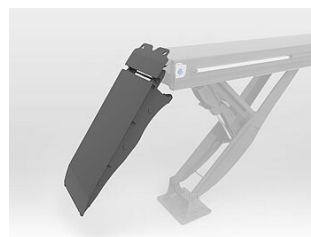
HDSF07-AS0X
anti-skid surface anti-skid class R13



HDSF0713-235
2 ascending ramps, 2350 mm



HDSF0713-330
2 ascending ramps, 3300 mm



HDSF0713-180H
2 ascending ramps, hanging, 1800 mm



HDSMHFL160-200-F07
jacking beam 16 t, pneumatic



HDSF07BA-XXXXX
floor levelling for pits of platforms



HDSF07FV-XX
Galvanizing



HDSF07DUROPLEX-XX
Special coating in addition to galvanizing



HDSF07-SK01
2. control box in the washing area